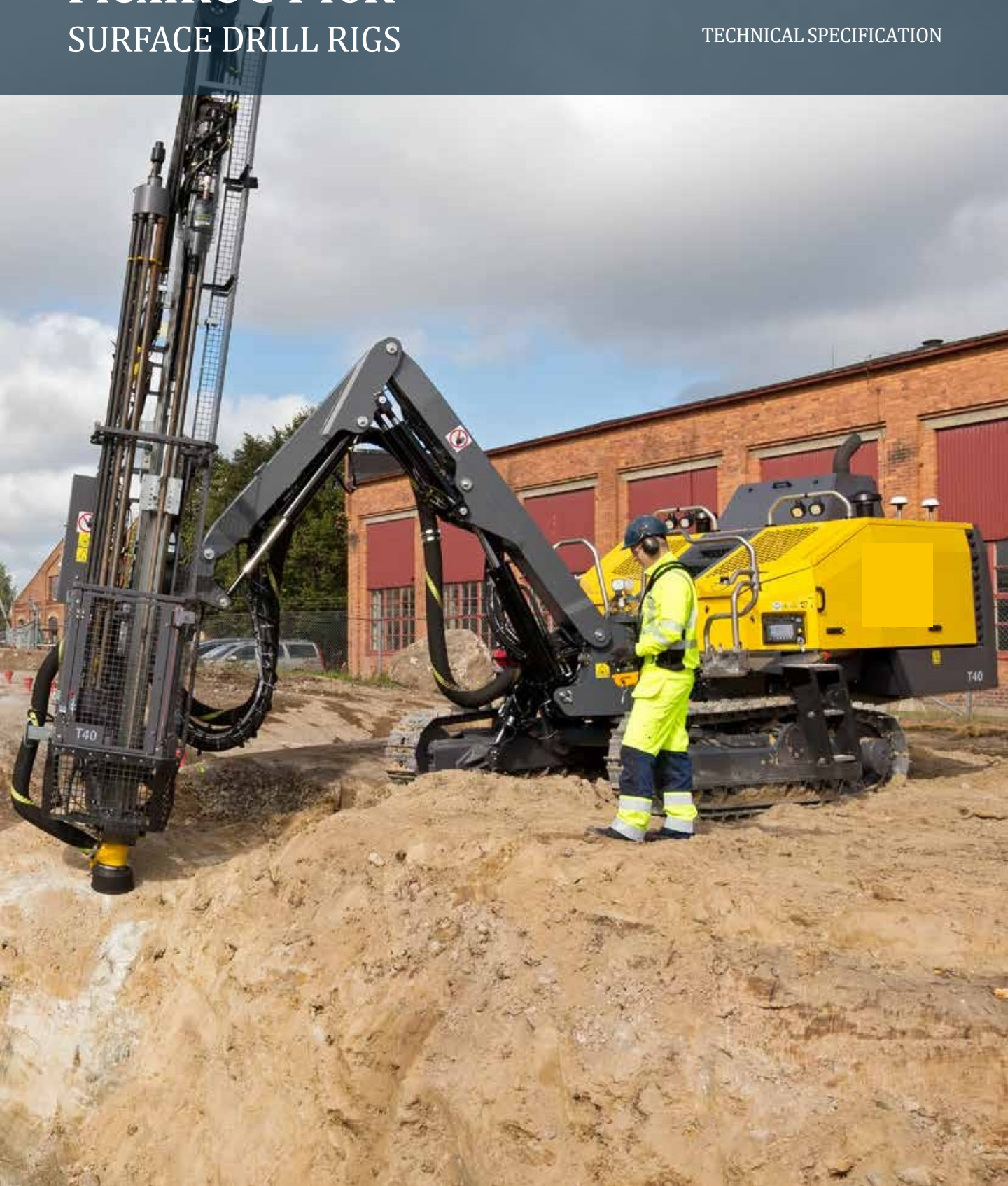


# FlexiROC T40R

## SURFACE DRILL RIGS

TECHNICAL SPECIFICATION



# Technical specifications

## Main Components

- Track frames with single grouser pads and cleaning holes, hydraulic track oscillation and two speed traction
- Caterpillar turbo charged diesel engine or C 7.1 (Tier 4 Final and Add Blue)
- screw type compressor
- Radio Remote Controlsystem
- Folding boom system
- Aluminum profile feedbeam
- Hydraulic rock drill
- Dust collection system
- Hydraulic cylinder feed with hose guide and double drill rods support with movable lower guide/dust hood
- Carousel type rod handling system

## Hole range (recommended)

	Thread	Metric	US
FlexiROC T40 R	T45, T51	Ø 64-127 mm	Ø 2.5"-5"
<b>Hydraulic rod handling system for max hole length, with 3,6 m (12') ext. rods</b>			
FlexiROC T40 R	T45, T51	28 m	92'

## Hydraulic rock drill

Rock drill	Drill rig	Hole diameter		Impact power	Hydraulic pressure, max		Impact rate, max	Torque, max		Weight approx	
COP SC25-HF	FlexiROC T40 R	Ø 64-89 mm	Ø 2,5"-3,5"	25 kW/33,5 hp	240 bar	3 481 psi	55/71 Hz	1550 Nm	1143 lbf/ft	189 kg	417 lb
COP SC25X-HF										250 kg	551 lb
COP SC25-HE	FlexiROC T40 R	Ø 76-127 mm	Ø 3"-5"	25 kW/33,5 hp	200 bar	2 900 psi	44/55 Hz	1970 Nm	1453 lbf/ft	195 kg	430 lb
COP SC25X-HE										255 kg	562 lb

## Feed

FlexiROC T40 R	Metric	US
Feed extension	1400 mm	55"
Feed rate, max	0.92 m/s	184 ft/min
Feed force, max	20 kN	4 400 lbf
Tractive pull, max	20 kN	4 400 lbf
Total length	7 140 mm	281"
Travel length	4 240 mm	167"

## Engine

### Caterpillar turbo charged diesel engine

CAT C7.1 Tier 4 Final/Stage 5 (EU/US cert.)	168 kW/225 hp (at 2 200 rpm)
---	------------------------------

## Compressor

OIS K-36-C111GD, screw compressor	Metric	US
Working pressure, max	10.5 bar	152 psi
FAD, at normal working pressure	149 l/s	316 cfm

## Hydraulic system

Return and drainage filters (filtration rate)	16 µm absolute
Hydraulic oil cooler max ambient temperature	50°C (122°F)

## Volumes

	Metric	US
Hydraulic oil tank	250 l	65 gal
Hydraulic system, total	300 l	79 gal
Compressor oil	24 l	6.3 gal
Diesel engine oil	28 l	7.4 gal
Diesel engine, cooling water	35 l	9.2 gal
Diesel engine, fuel tank	370 l	98 gal
Traction gear	3 l	0.8 gal
Lubrication tank (ECL)	10 l	2.6 gal

## Dust collector DCT 110

	Metric	US
Filter area	11 m²	118 sq.ft
Suction capacity at 500 mm wg	560 l/s	1200 cfm
Suction hose diameter	127 mm	5"
Cleaning air pressure, max	7.5 bar	109 psi
Cleaning air consumption	2-4 l/pulse	0.06-0.12 cu.ft/pulse
Number of filter elements	11 pcs	

## Electrical system

Voltage	24 V
Batteries	2 x 12 V, 185 Ah
Alternator	28 V, 95 Ah
Work lights, front	4 x 70 W
Work lights, rear	2 x 70 W
Work lights, feed	2 x 70 W